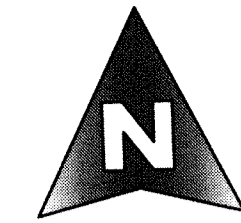


PRESTON SQUARE

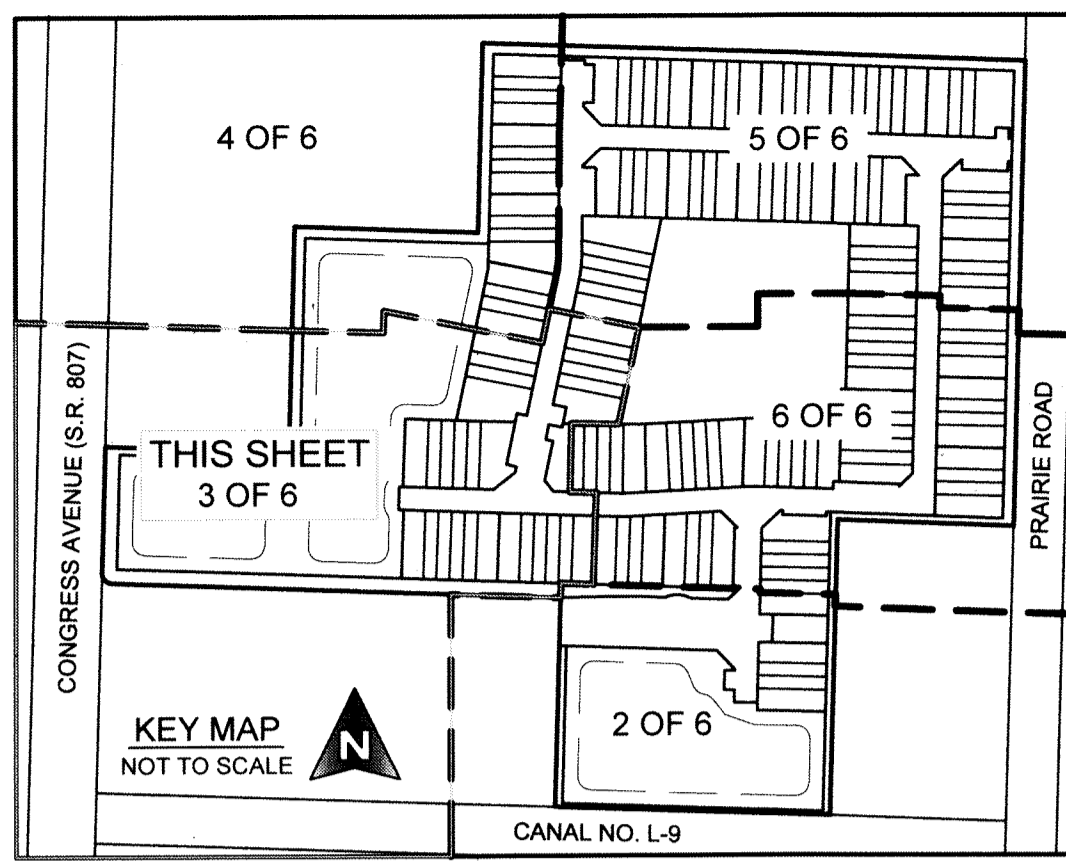
BEING A RE-PLAT OF A PORTION OF BERMUDA PARK ADDITION NO. 1, AS RECORDED IN PLAT BOOK 21, PAGE 50, PUBLIC RECORDS OF PALM BEACH COUNTY, FLORIDA AND LYING IN SECTION 17, TOWNSHIP 44 SOUTH, RANGE 43 EAST, VILLAGE OF PALM SPRINGS, PALM BEACH COUNTY, FLORIDA



GRAPHIC SCALE
0 15 30 60 90
(IN FEET)
1 INCH = 30 FT.

154

COUNTY OF PALM BEACH)
STATE OF FLORIDA) SS
THIS PLAT WAS FILED FOR RECORD AT)
M. THIS) DAY OF)
RECORDED IN PLAT BOOK NO.)
ON PAGE) THRU)
SHARON R. BOCK,
CLERK AND COMPTROLLER
BY:) D.C.

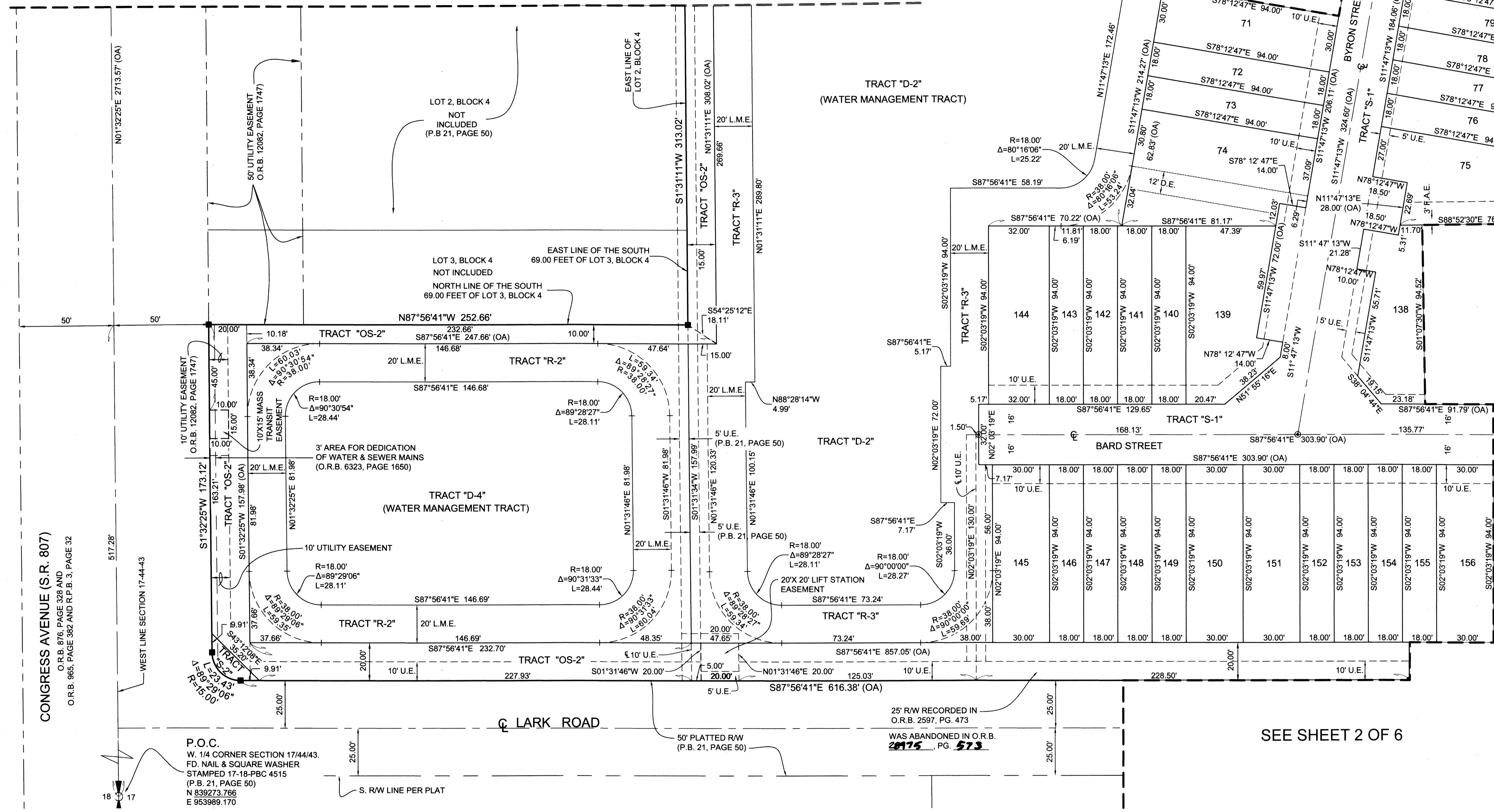


SEE SHEET 4 OF 6

SEE SHEET 4 OF 6

SEE SHEET 6 OF 6

SEE SHEET 2 OF 6



CONGRESS AVENUE (S.R. 807)
O.R.B. 876, PAGE 328 AND
O.R.B. 965, PAGE 382 AND R.P.B. 3, PAGE 32

P.O.C.
W. 1/4 CORNER SECTION 17/44/43.
FD. NAIL & SQUARE WASHER
STAMPED 17-18-PBC 4515
(P.B. 21, PAGE 50)
N 839273.766
E 953989.170

LEGEND

- | | | |
|---------------------------------------|---|---|
| P.O.C. = POINT OF COMMENCEMENT | ⊙ = DENOTES FOUND PALM BEACH COUNTY DISK IN CONCRETE | FD = FOUND OVERALL |
| P.O.B. = POINT OF BEGINNING | ⊙ = SET NAIL AND ALUMINUM DISK, STAMPED P.C.P. L.B. 2438 | OA = OVERALL CONCRETE MONUMENT |
| P.C.P. = PERMANENT CONTROL POINT | ■ = SET 4"x4"x24" C.M. WITH ALUMINUM DISK, STAMPED P.R.M. L.B. 2438 | F.P.L. = FLORIDA POWER AND LIGHT |
| P.R.M. = PERMANENT REFERENCE MONUMENT | □ = DENOTES FOUND P.R.M. (AS SHOWN IF ANY) | L.E. = LANDSCAPE EASEMENT |
| O.R.B. = OFFICIAL RECORD BOOK | C.L. = CHORD LENGTH | P.U.D. = PLANNED UNIT DEVELOPMENT |
| P.B. = PLAT BOOK | C.B. = CHORD BEARING | P.B.C.U.E. = PALM BEACH COUNTY UTILITY EASEMENT |
| P.G.S. = PAGES | L.M.A.E. = LAKE MAINTENANCE ACCESS EASEMENT | C-1/C-2 = REFERS TO CENTERLINE CURVE TABLE NUMBER |
| D.B. = DEED BOOK | R.L. = RADIAL LINE | P.S.M. = PROFESSIONAL SURVEYOR AND MAPPER |
| P.B.C. = PALM BEACH COUNTY | N = NORTHING, WHEN USED WITH COORDINATES | NO = NUMBER |
| R/W = RIGHT OF WAY | E = EASTING, WHEN USED WITH COORDINATES | S.E. = SIDEWALK EASEMENT |
| ☐ = CENTERLINE | L.A.E. = LIMITED ACCESS EASEMENT | L.M.E. = LAKE MAINTENANCE EASEMENT |
| U.E. = UTILITY EASEMENT | L.S.E. = LIFT STATION EASEMENT | |
| D.E. = DRAINAGE EASEMENT | | |
| R. = RADIUS | | |
| L. = ARC LENGTH | | |
| Δ = CURVE CENTRAL ANGLE | | |

COORDINATE NOTE:
STATE PLANE COORDINATES SHOWN ARE GRID DATUM, NAD 83 1990 ADJUSTMENT, FLORIDA EAST ZONE, COORDINATE SYSTEM 1983 STATE PLANE, TRANSVERSE MERCATOR PROJECTION
LINEAR UNIT = US SURVEY FEET
ALL DISTANCES ARE GROUND
SCALE FACTOR = 1.0000429
GROUND DISTANCE X SCALE FACTOR = GRID DISTANCE
BEARINGS AS SHOWN HEREON ARE GRID DATUM, NAD 83 1990 ADJUSTMENT, FLORIDA EAST ZONE.

SHEET 3 OF 6



MICHAEL B. SCHORAH & ASSOCIATES, INC.
1850 FOREST HILL BLVD., SUITE 206
WEST PALM BEACH, FLORIDA 33406
E.B.F. 2438 TEL. (561) 968-0080 FAX. (561) 642-9726 LB# 2438
PRESTON SQUARE